



FORMULA 60

STEELGARD RUST PREVENTIVE



SURFACE PREPARATION

- For maximum protection, surfaces should be free from dirt and oil. Formula 60 can be applied over damp metal surfaces. In many instances, the coating has been applied to oily surfaces with good results.

APPLICATION

- Formula 60 is a water-based corrosion inhibitor that will freeze at 32°F (0°C) and is applied above freezing temperature. At room temperature, Formula 60 normally dries in approximately 15 minutes and will completely cure to a water-resistance coating which will not be washed off by water in 24 hours.

DIPPING

- Dipping application is recommended where a large number of small parts are protected. Draining time is usually less than one minute. Rust preventive formulation of pools in recessed areas should be avoided.

SPRAYING

- Formula 60 may be sprayed on by any spraying equipment designed to work with water-based coatings. The viscosity of Formula 60 (150-200 C.P.S) is sufficient to ensure a uniform corrosion-resistant surface on vertical or horizontal surfaces. Formula 60 should be sprayed as concentrated form as thinning or dilution with water may produce poor results.

DRYING TIME

- Formula 60 provides excellent protection for indoor and outdoor storage. It sets quickly at room temp, usually within 15 mins. Upon setting, it changes visibly from a soft blue milky film to a dry-touch blue translucent wax-like film. The curing process normally takes 24 hours but may be completed in as little as 5 mins with blower fans, heat lamps or drying rooms. Coating should not be subjected to rain until film has been cured.

BENEFITS OF FORMULA 60

- High Performance** – waterborne rust preventive on metal surfaces. Meets the performance requirements for Military Specification MIL-C-16173D-Grade 1.
- Clean & Safe** – contains no toxic or harmful materials. An alternative to dirty and flammable solvent-based rust preventives. Suitable for both indoor and outdoor use.
- Stable** – will not wash off during outside exposure, even in severe rain, sleet, hail or high humidity.

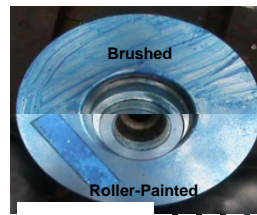
Formula 60 removes finger prints from metal surfaces during application and will not abrade under normal handling and packaging conditions.

- Water-Based** – results in fewer accidents, lower insurance cost and eliminates the need for expensive environmental safety equipment.
- Non-Reversible** – excellent rust preventive coating. Leaves a non-reversible hydroscopic film that covers an area 2 to 5 times greater than oils.
- Easy To Apply & Quick Drying** – which accounts for clean oil-free bins, packages and work areas. Formula 60 reduces plant clean-up and can be applied cold with quick-drying action.
- Non-Flammable, Non-Toxic.**

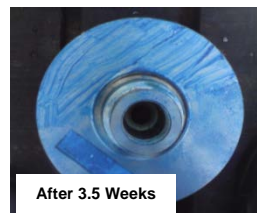


(Top) Fresh blue coating of Formula 60 Steelgard Rust Preventive on bonnet for one day.

The trial was conducted outdoor and exposed to sun and rain without cover.



(Centre) Blue coating of Formula 60 was still intact either brushed or roller-painted for one week.



(Bottom) No rust and good layer protection were observed on the bonnet even after 3.5 weeks.

